



## Specifications

### STRUCTURE :

Footings, Columns, Beams and Slabs in RCC grade.

### SUPER STRUCTURE :

All external walls of 9" thick and internal walls of 4 1/2" thick table molded quality red bricks in cement mortar.

### PLASTERING :

Two coats of cement plastering with sponge finishing.

### MAIN DOOR :

Best Teak Wood door frames and teak wood shutters aesthetically designed with fine finish.

### INTERNAL DOORS :

Best Teak Wood frames and shutters with flush doors of good quality.

### WINDOWS :

Window frames and shutters are with complete Aluminum with glass panel and Mosquito Mesh fitted with elegantly designed MS painted grills and standard hardware.

### FLOORING :

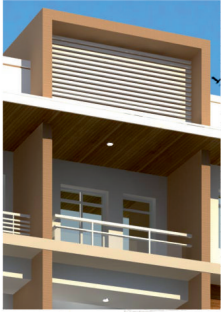
Marble Flooring.

### PAINTED :

Smooth finish with Altek and with plastic emulsion paint over a coat of primer for all the internal walls and exterior emulsion paint of Asian/ICI make over a coat of primer for the exteriors. Two coats of enamel paint with grey luppum for internal door, windows and grills.

### ELECTRICAL :

Concealed multi standard copper wiring with 3 phase meters and MCBs. Good quality modular switches, power plugs for geyser, washing machine, cooking range and refrigerator.



### TELEPHONE & TV :

Concealed points in hall and master bedroom and internet cable provision in hall.

### KITCHEN :

Granite slab for kitchen platform with glazed ceramic tiles dado upto 2'0" height with built-in Steel sink. Ceramic tile dado will be provided in the wash area up to 3'0" height.

### TOILETS :

Ceramic anti skid tiles for flooring and walls with glazed ceramic tile dado up to 7'0" height of

Johnson or equivalent make. Good quality sanitary ware with bathroom fittings of reputed make.

### LIFT :

Six passengers lift.

### GENERATOR :

Standby generator of reputed make to operate lift, pumps, lobby, staircase lighting and selected points in each flat.

\* Note : This Brochure is only a conceptual presentation of the project and not a legal offering. Developers reserve the right to change, alter, modify plan, elevation and specification time to time as deemed fit.

Promoters

# CONSTRUCTION INFOSYS

# 10-2-287/1/2, 11nd Floor, Moiz Residency,  
Shantinagar MasabTank Hyderabad.  
Mobile No : 88855 88121  
www.constructioninfosys.com  
Email : constructioninfosys@rediffmail.com

Site Address

## EAST VIEW APARTMENT

# 10-3-313/C, P.S Nagar,  
Vijay Nagar Colony, Hyderabad.

Consultants

**PLANUM GROUP**  
Architects & Engineers  
Gupta Towers,  
Opp. Blood Bank, Kachiguda

Structural

**CADSCON**  
Structural Consultant  
Red Hills, Hyderabad.

Barma Ad Systems +91 9866401362

A project by  
**CONSTRUCTION INFOSYS**



# EAST VIEW APARTMENT

Luxury Flats @Vijaya Nagar Colony



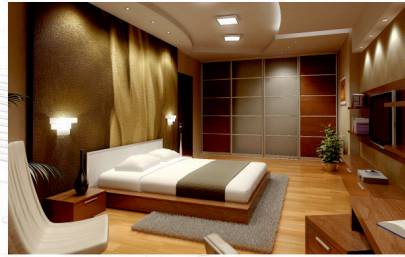
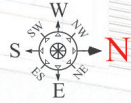
## Place Where Life

## Move with HAPPINESS



# Typical Floor Plan

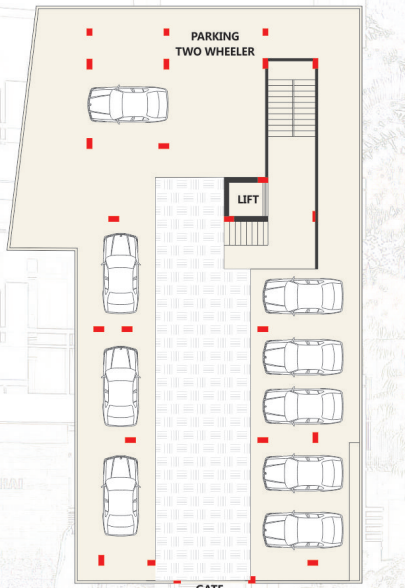
|              |          |          |
|--------------|----------|----------|
| Flat No.     | 1        | 2        |
| Area in sft. | 1425 Sft | 1450 Sft |



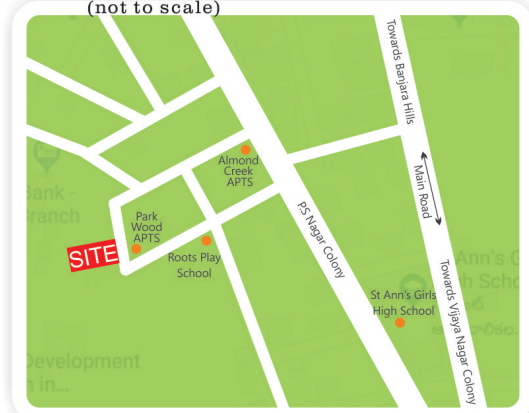
### Project Highlights

- As per Vasthu
- Prime Area
- Very Close to Shopping Malls & Schools
- Excellent Ventilation
- Power Back Up
- Quality and Pleasant Location

## Parking Plan



## Location Map (not to scale)



**EAST VIEW APARTMENT**  
Luxury Flats @Vijaya Nagar Colony

